

ScIEnCe

Mrs. Natalie Zavala

Rm. B24

zavala.natalie@cusd80.com

Remind:  **@zavalasci7**

Resources ~ Interactive Science Notebooks, HMH Science Dimensions Text and Online, Mystery Science

Together we will take a look at Science through investigations, hands-on labs, and explorations into topics including life science, Earth & space science, physical science, and engineering. These will provide your student opportunities to step away from their books/computers and actively participate in their learning. Students will build a foundation for how to evaluate evidence, make valid claims, develop reasoning skills, and synthesize information from a variety of sources.

WE WILL CONDUCT OURSELVES WITH DIGNITY AND DECORUM.



RESPECT YOURSELF



RESPECT OTHERS



RESPECT THINGS



DISRESPECTFUL



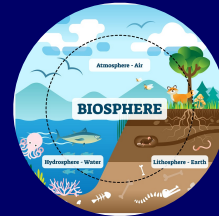
DISRUPTIVE



DANGEROUS

INTEGRATED

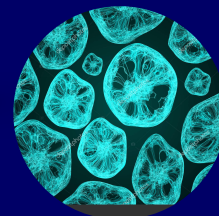
Quarter 1
Energy Transfer



Quarter 2
Earth Processes



Quarter 3
Cells & Systems

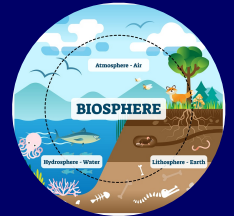


Quarter 4
Invisible Forces & Newton's Laws



HONORS

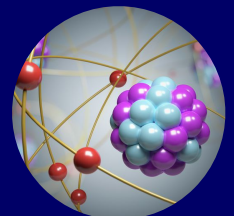
Quarter 1
Energy Transfer



Quarter 2
Earth Processes/
Waves & Innovation Fair



Quarter 3
Atoms



Quarter 4
Invisible Forces & Newton's Laws



Please refer to student handbook for detailed school policies.

BEHAVIOR: Behavior that is disrespectful, disruptive or dangerous will receive a warning. Behaviors that continue beyond a warning will be documented by the student on a reflection form and communicated with parents by Mrs. Zavala. Repeated infractions will earn a referral and communication with administration.

ABSENCES & LATE WORK: Attendance is **VITAL** in the Science classroom as there are no make-ups for explorations/investigations/lab work.

- Students have the responsibility to collect and make-up missed work in the event of an absence. **It is mandatory that students schedule and make up Tests and Quizzes outside of class time.** Tests retakes will be given at the discretion of Mrs. Zavala.
- Students are also responsible for maintaining organized agendas and turning in assigned work on time. Late work will not receive full credit and will not be accepted once a UNIT assessment has been given for that content.

GRADING POLICY

Points will be given on :

- homework & classwork including explorations/investigations/labs
- quizzes, unit quarter exams and semester finals.

Semester grades are calculated as follows:

- Quarter 1 45% + Quarter 2 45% + Semester Final 10%
- Quarter 3 45% + Quarter 4 45% + Semester Final 10%

